

COMPACT, HIGH SPEED, BENCH TOP HYDRAULIC PRESS

OVERVIEW

The A-Series Adjustable Air Press is a highly versatile bench top air press that comes complete with a full range cylinder head adjustment. This air press gives the ability for easy and accurate die set-ups by allowing proper shut height and cylinder stroke.

These A-Series air press comes in three sizes ranging from 1200 Lbs. to 5000 Lbs. of capacity. Standard features include a full head cylinder adjustment, anti-rotation ram guide, precision honed & chromed cylinders, air cushions on both ends of the stroke, and a dual acting air cylinder.

WHAT MAKES US BETTER?

The A-Series Adjustable Air Press line is a simple yet extremely flexible bench top air press which has been manufactured at our Jackson, Michigan facility for over 65 years. This manufacturing process allows us to offer our customers an air press that is assembled and built to their specifications and control package needs.

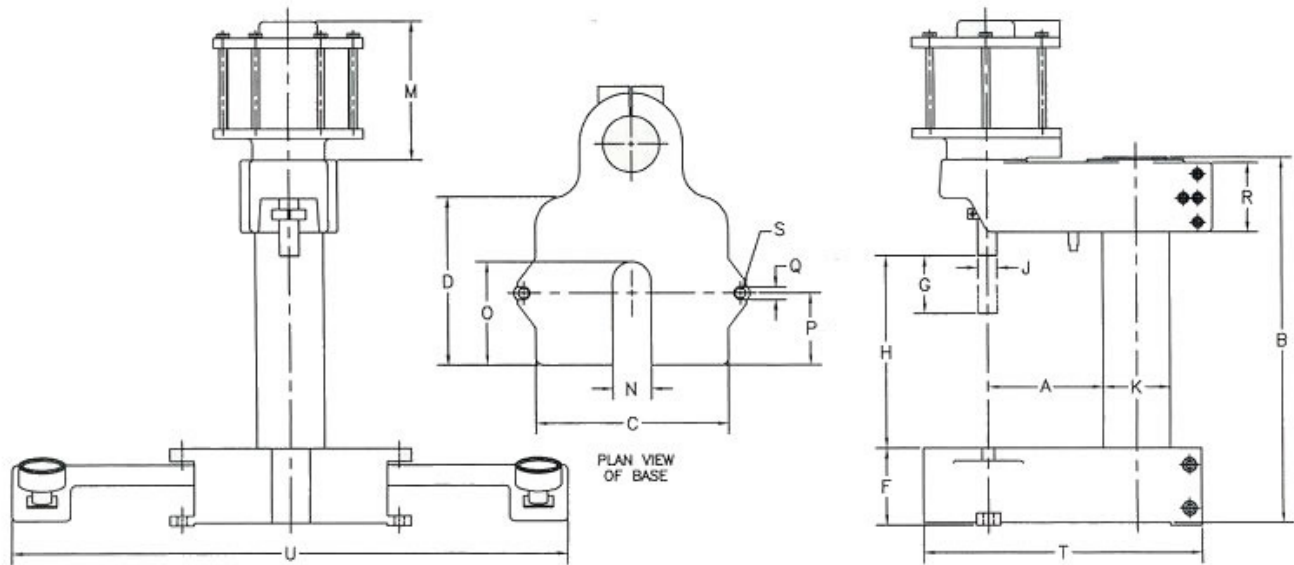
ADVANTAGES

- Ruggedly Built
- Flexible for Multi-Uses
- Low Maintenance
- Easily Configured to Suit
- Multiple Control Package Options



SPECIFICATIONS	MODEL		
	12-A	28-A	50-A
Force @ 100 psi Air	1200 Lbs.	2800 Lbs.	5000 Lbs.
Stroke (Note: Adjustable with downstop option)	2.50"	3.00"	3.00"
Daylight (Adjustable)	0" to 7.50"	0" to 10.0"	0" to 10.0"
Throat Depth	6.0"	6.0"	6.0"
Ram Diameter	0.88"	1"	1"
Ram Thread	.50"-20	.50"-20	.50"-20
Cylinder Bore	4.0"	6.0"	8.0"
Cylinder Port (NPT)	.375"	.500"	.500"
Weight	85 lbs.	200 lbs.	250 lbs.
Note: Some of the above specifications (stroke, daylight, and ram thread) can be designed to meet your application requirements. Please see the Standard Features & Options page.			

A-SERIES PRESS DIMENSIONS



DIM KEY	Description (U.S. Inches)	Model 12-A	Model 28-A	Model 50-A
A	Ram Centerline to Column	6.00	6.00	6.00
B	Column Height	13.50	19.00	19.00
C	Platen Left to Right	7.00	10.00	10.00
D	Platen Front to Back	6.00	8.75	8.75
F	Base Height	3.00	4.00	4.00
G	Stroke	2.50	3.00	3.00
H	Arm Adjustment Range	0-7.50	0-10	0-10
J	Ram Diameter	0.88	1.00	1.00
K	Column Diameter	2.50	3.50	3.50
M	Cylinder Height	6.94	7.38	7.38
N	Slot Width	3.00	2.00	2.00
O	Slot Depth	4.50	5.38	5.38
P	Centerline of Ram to Front of Base	3.00	3.75	3.75
Q	Mounting Slot	.50Wx.88D	.66Wx.31D	.66Wx.31D
R	Arm Thickness	2.75	3.75	3.75
S	Mounting Bolt Hole Diameter	0.41	0.53	0.53
T	Front to Back Overall	12.56	14.50	14.50
U	Overall Width	25.75	28.75	28.75
*	Force @ 100 psi	1200 lbs.	2800 lbs.	5000 lbs.
*	Cylinder I.D.	4.00	6.00	8.00
*	Cylinder Port (NPT)	.375	.500	.500
*	Shipping Weight in lbs.	85	200	250
*	Distance Between MTG. Holes	5.75	11.25	11.25

Note: Dimensions "G" & "H" may change per customers request.

A-SERIES FEATURES & OPTIONS

Our objective is to offer you a solution to your assembly and forming needs. If our standard features or available options do not meet your application requirements, please consult our factory to see about us offering an affordable solution to meet your design needs.

STANDARD FEATURES

- Full Cylinder Head Adjustment
- ½"-20 Threaded Cylinder Rod
- Anti-Rotation Ram Guide
- Precision Honed & Chromed Cylinder
- Air Cushions on Both Ends of Stroke
- Dual Acting Air Cylinder
- Rugged Bench Top Design

AVAILABLE OPTIONS

- 2.0" Adjustable Downstop (positive stroke adjustment)
- Additional Stroke Lengths
- Additional Column Heights (increase daylight)
- Riser Screw Adjustment with Keyway in Press Column
- Two-Hand Non-Tie Down Control Packages
- Pressure / Dwell / Distance Return Options
- Jog Control Circuit
- Fault Circuit Control Package (E-FI)
- Machine Bases
- Customer Specified Threaded Cylinder Rod

CUSTOM DESIGNED OPTIONS

- Light Curtain & Guarding Packages
- PLC Control Packages
- Load Cell Monitoring Packages
- 2-Post or 4-Post Designs
- Custom Designed Control Package
- Selectable Modes of Operation
- Control Systems Designed for Future Expansion
- Custom Tooling and Fixture Packages
- Emergency Stop Control Circuit
- 24vDC Control Circuit

**MODEL 28A
ADJUSTABLE AIR PRESS**

- Additional 6.0" of Column/Daylight Opening
- Optional 2.0" Adjustable Downstop (positive stroke adjustment)
- Optional Riser Screw Adjustment with Keyway in Press Column
- Standard Electric (EDP-1) Two-Hand Non-Tie Down Control Package

A-SERIES CONTROL PACKAGE OPTIONS**EDP = Electric Logic**

(110v electricity required)

DP = Pneumatic Logic

(No electricity required)

EDP-1 or DP-1: Basic two-hand non-tie down control package with single regulator

Operator initiates and maintains both actuators at the same time to advance the press stroke. Once the operator releases one or both actuators, the ram returns to home position.

EP-1-NP or DP-1-NP: Two-hand non-tie down control package with jog control

Operator initiates and maintains both actuators at the same time to advance the press stroke. If the operator releases one of both actuators during the downward stroke, the ram stops downward motion. The operator can either proceed with the downward cycle by re-initiating the actuators until the auto ram return option is met (see auto ram return options), or the operator can manually retract the ram to home position by pressing the manual ram return button
(Note: includes P-TD or E-TD Pressure with Timer Return as the standard auto ram return option)

Auto Ram Return Options:

(Add to the above standard control packages – excluding the DP-1-NP or EDP-1-NP)

E = Electric Logic / P= Pneumatic Logic

E-TD2 or P-TD2: Pressure with Timer Return:

Self-adjusting pressure sensor (auto sense) senses the press has stalled and initiates an adjustable press dwell timer which returns the ram

E-DR or P-DR: Distance Return with Timer Return

Distance sensor (end of stroke) initiates and adjustable press dwell timer which returns the ram

E-FI: Fault Circuit (only available in electric logic)

Fault indicator with reset for short stroke notification (press stroke did not complete the normal cycle). Pressure sensor initiates an adjustable press dwell timer which returns the ram. Also, includes illuminated manual reset indicator

E-FIRR: Ram Capture (only available in electric logic)

Pressure initiated ram capture (muting); allowing the operator to remove their hands from the actuators and an adjustable press dwell timer returns the ram. Complete with illuminated ram capture indicator and manual retract button

Other Available Options:

(please consult factory)

- 24vDC Control Circuit • Programmable Logic Controller (PLC) • Emergency Stop Control Circuit • Light Curtains and Guarding
- Rod End Load Cell • Linear Position Transducer • Press Force Monitoring • Custom Designed Control Systems

ISO 9001 REGISTERED (WITH DESIGN)

Air-Hydraulics is committed to delivering quality products on time to achieve customer satisfaction. Air-Hydraulics uses a process approach to achieve this policy in accordance with ISO 9001 and is committed to continually improve at this process.

www.airhydraulics.com
info@airhydraulics.com
 Phone: 1-800-837-4355